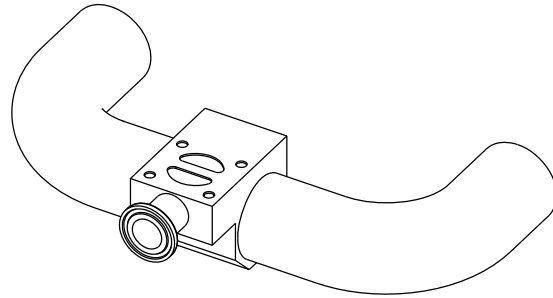
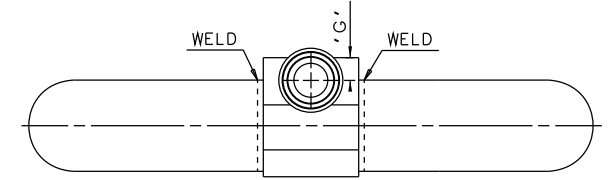
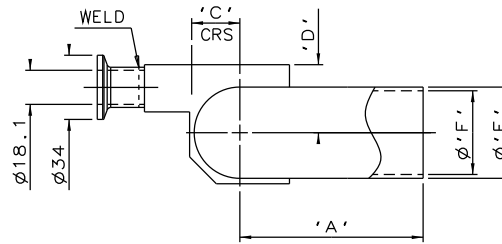
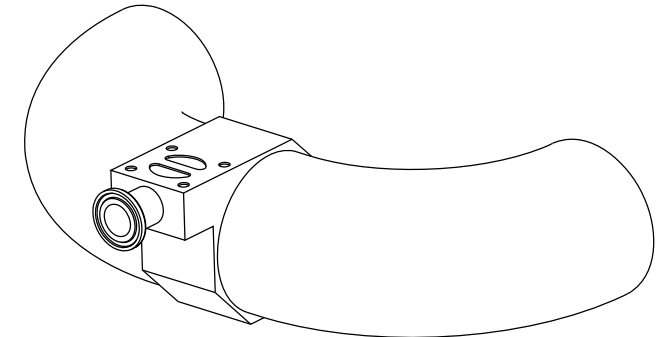
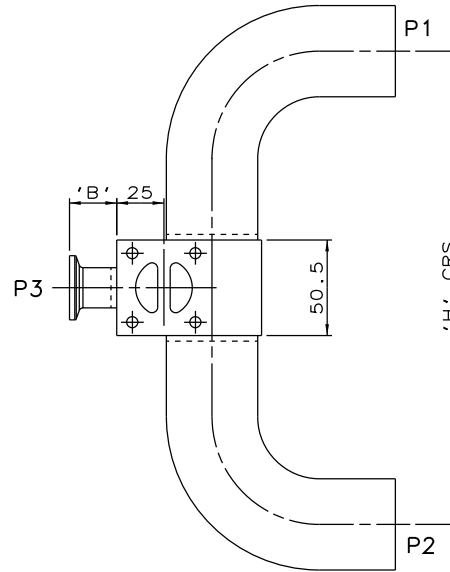


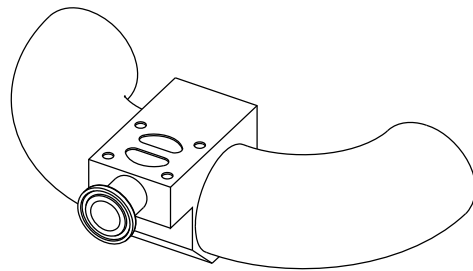
DN15 MAINLINE ONLY



DN20 TO DN40 MAINLINE ONLY

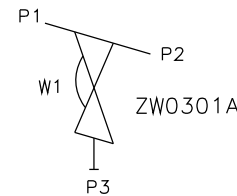


DN65 TO DN100 MAINLINE ONLY



DN50 MAINLINE ONLY

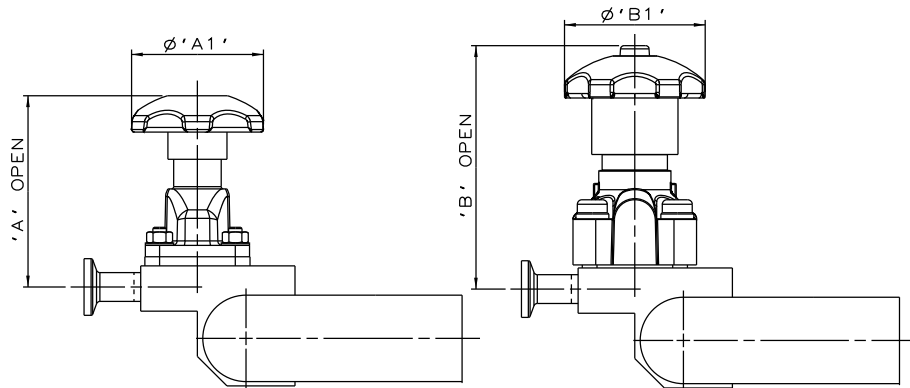
MAINLINE SIZE mm	A mm	B mm	C mm	D mm	ØE mm	ØF mm	G mm	H mm	BODY WEIGHT Kgs
DN15	55.0	25.0	12.1	23.5	21.3	18.1	12.7	166.5	0.8
DN20	68.5	25.0	15.2	26.0	26.9	23.7	13.0	193.5	0.7
DN25	78.0	25.0	18.2	30.0	33.7	29.7	12.7	212.5	1.0
DN32	87.5	25.0	22.2	34.0	42.4	38.4	12.7	231.5	1.4
DN40	97.0	25.0	25.5	36.0	48.3	44.3	12.7	250.5	1.6
DN50	76.0	25.0	30.7	40.0	60.3	55.1	12.7	208.5	1.9
DN65	95.0	25.0	38.5	44.0	76.1	70.9	12.7	260.5	2.5
DN80	114.0	25.0	45.2	47.0	88.9	83.7	13.7	299.5	3.1
DN100	152.0	25.0	57.9	60.2	114.3	109.1	12.7	374.5	5.0



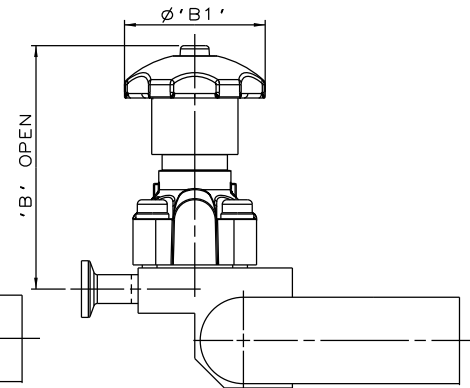
ORIENTATION AS PER P&ID DIAGRAM FOR OPTIMUM DRAINABILITY.

The information on this sheet is Private and Confidential and is the property of Crane Process Flow Technologies Limited and must not be published directly or indirectly in any manner whatsoever without the written permission of the Company and must not be used in any way detrimental to their interests.
© Crane Process Flow Technologies

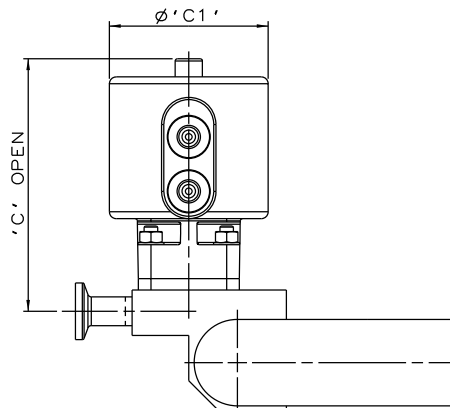
CRANE	Process Flow Technologies A Crane Co. Company	Saunders The Science Inside	
Title SCHEDULE OF LEADING DIMENSIONS FOR DN15 WEIR POINT OF USE 'T' BODY WITH : MAINLINE : ISO 1127 S1 BUTT WELD ENDS BRANCH : DN15 HYGIENIC CLAMP END WITH ISO 1127 S1 BORE			
Drawn R1	Date 17.04.12	UNCONTROLLED IN HARD COPY FORMAT	
Checked RND	Date 17.04.12		
First Angle Projection Method E	DO NOT SCALE	Drawing No. WEB-185	Issue. 1



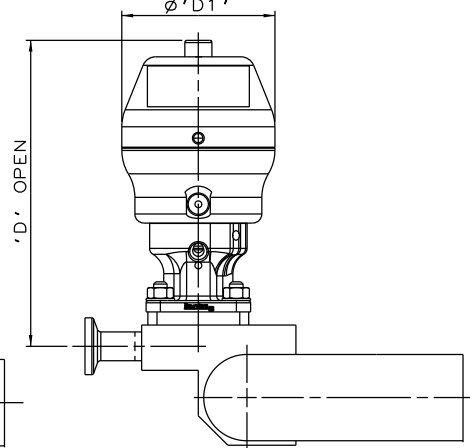
SS NON SEALED
BONNET ASSEMBLY



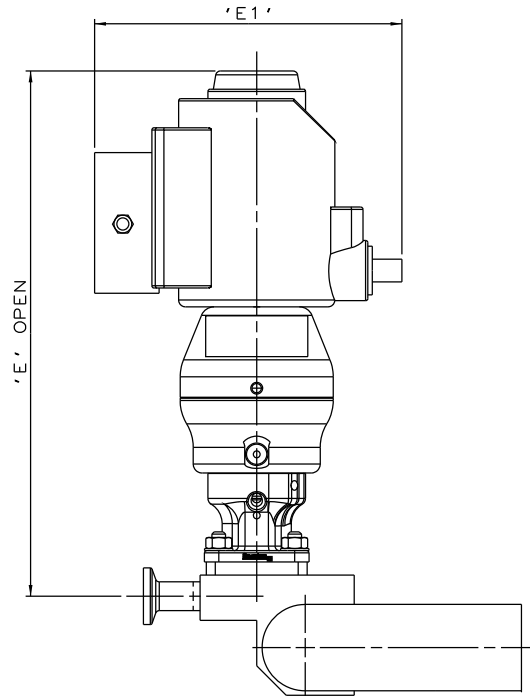
PES BONNET
ASSEMBLY



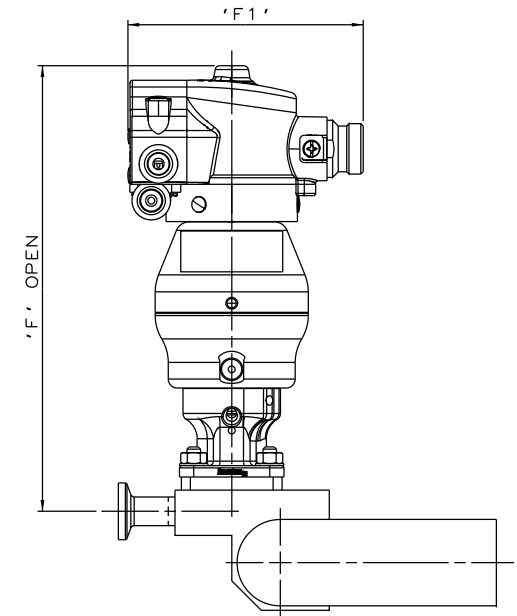
EC ACTUATOR
(ALL MODES)



*S360 ACTUATOR



*S360 ACTUATOR
WITH I-VUE SENSOR



*S360 ACTUATOR
WITH M-VUE SENSOR

The information on this sheet is Private and Confidential and is the property of Crane Process Flow Technologies Limited and must not be published directly or indirectly in any manner whatsoever without the written permission of the Company and must not be used in any way detrimental to their interests.
© Crane Process Flow Technologies

CRANE	Process Flow Technologies A Crane Co. Company	Saunders The Science Inside
--------------	--	---------------------------------------

Title
SCHEDULE OF LEADING DIMENSIONS FOR DN15/0.50 WEIR
T-BODY (DN15/0.50 BRANCH) WITH MAINLINE BUTT WELD ISO 1127 S1
ENDS, BRANCH HYGIENIC CLAMP END WITH ISO 1127 S1 BORE.
FITTED WITH TOPWORKS OPTIONS

Drawn RI	Date 09.05.17	UNCONTROLLED IN HARD COPY FORMAT
Checked RND	Date 09.05.17	
First Angle Projection Method E	DO NOT SCALE	Drawing No. WEB-185-ASSY
		Issue. 1

* DIMENSIONS SHOW MAXIMUM ENVELOPE FOR ALL MODES

BRANCH SIZE	A		A1		B		B1		C		C1		D		D1		E		E1		F		F1		
	mm	inch	mm	inch	mm	inch	mm	inch	mm	inch	mm	inch	mm	inch	mm	inch	mm	inch	mm	inch	mm	inch	mm	inch	
DN15	0.50	88.7	3.49	62.0	2.44	111.7	4.40	62.0	2.44	115.7	4.56	70.0	2.75	139.7	5.50	67.5	2.66	235.7	9.28	136.0	5.35	200.0	7.87	103.8	4.09